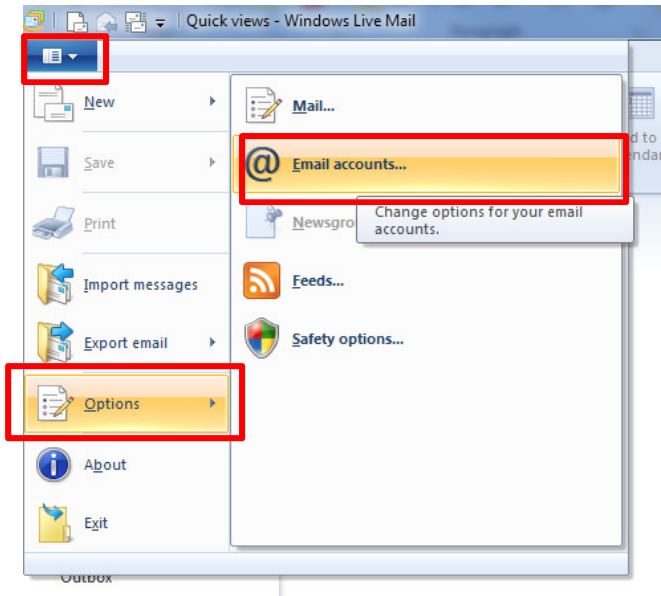
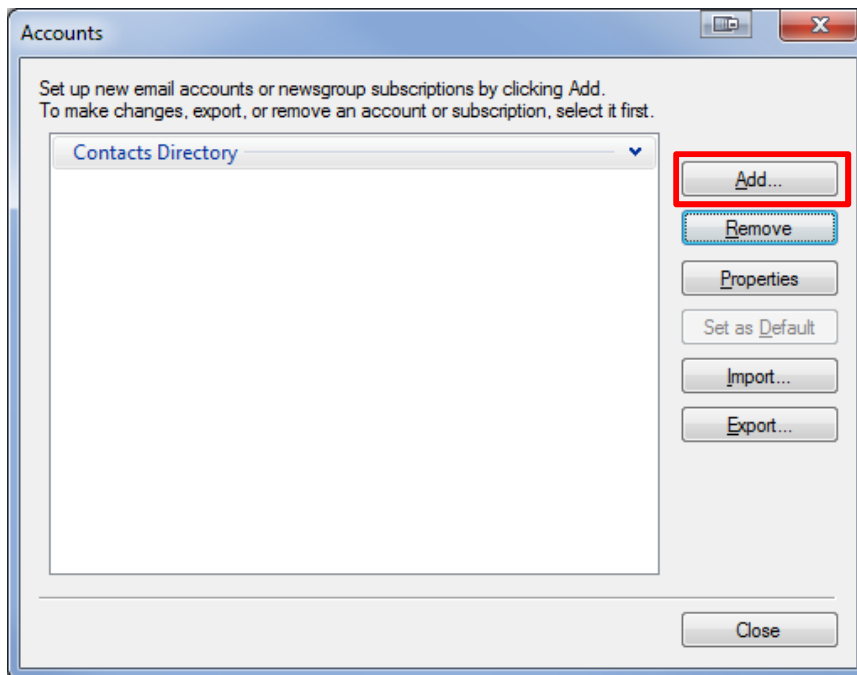


Windows Live Mail

1. While in Windows Live Mail click on the **Blue Button** in the upper left hand corner and go to **Options** and then **E-mail Accounts**



2. Next click the **Add** button



3. Fill out your **E-mail Address, Password, and your Name**. Then put a check mark in **Manually configure server settings**.

The screenshot shows the 'Add your email accounts' dialog box in Windows Live Mail. The title bar reads 'Windows Live Mail'. The main heading is 'Add your email accounts' in green. Below it, there is a sub-heading: 'If you have a Windows Live ID, sign in now. If not, you can create one later.' and a link 'Sign in to Windows Live'. The form contains several fields: 'Email address:' with the value 'JohnDoe@blomand.net', a link 'Get a Windows Live email address', 'Password:' with masked characters '*****', a checked checkbox 'Remember this password', 'Display name for your sent messages:' with the value 'John Doe', and a checked checkbox 'Manually configure server settings'. To the right of the form, there is text: 'Most email accounts work with Windows Live Mail including Hotmail Gmail and many others.' At the bottom right, there are 'Cancel' and 'Next' buttons.

4. Make sure your server type is **POP**, then fill in the incoming mail server as **mail.blomand.net** and outgoing mail server as **smtp.blomand.net** and your logon username as your **e-mail address**. Also put a check in **Requires authentication** under outgoing server.

The screenshot shows the 'Configure server settings' dialog box in Windows Live Mail. The title bar reads 'Windows Live Mail'. The main heading is 'Configure server settings' in green. Below it, there is a sub-heading: 'If you don't know your email server settings, contact your ISP or network administrator.' The form is divided into two sections: 'Incoming server information' and 'Outgoing server information'. In the 'Incoming server information' section, there is a 'Server type:' dropdown menu set to 'POP', a 'Server address:' field with 'mail.blomand.net', a 'Port:' field with '110', and an unchecked checkbox 'Requires a secure connection (SSL)'. In the 'Outgoing server information' section, there is a 'Server address:' field with 'smtp.blomand.net', a 'Port:' field with '25', an unchecked checkbox 'Requires a secure connection (SSL)', and a checked checkbox 'Requires authentication'. Below these sections, there is an 'Authenticate using:' dropdown menu set to 'Clear text', a 'Logon user name:' field with 'JohnDoe@blomand.net', and 'Cancel', 'Back', and 'Next' buttons at the bottom.

5. Your e-mail is now setup. Click Finish.

