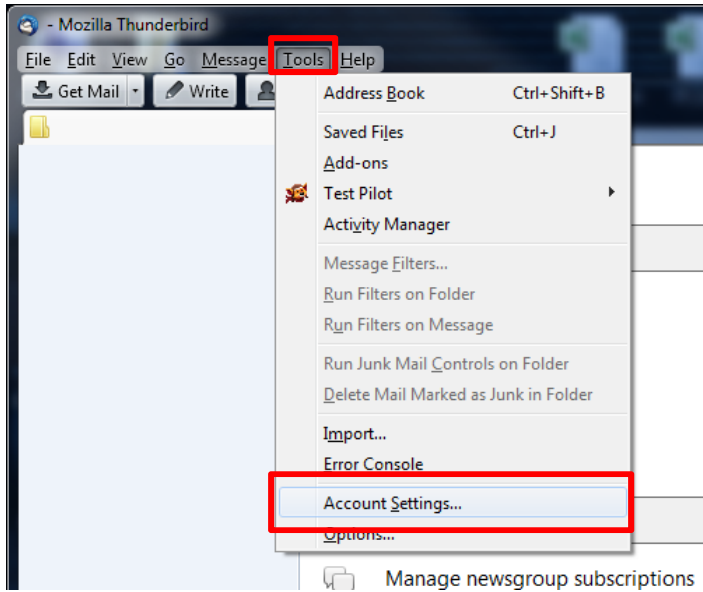
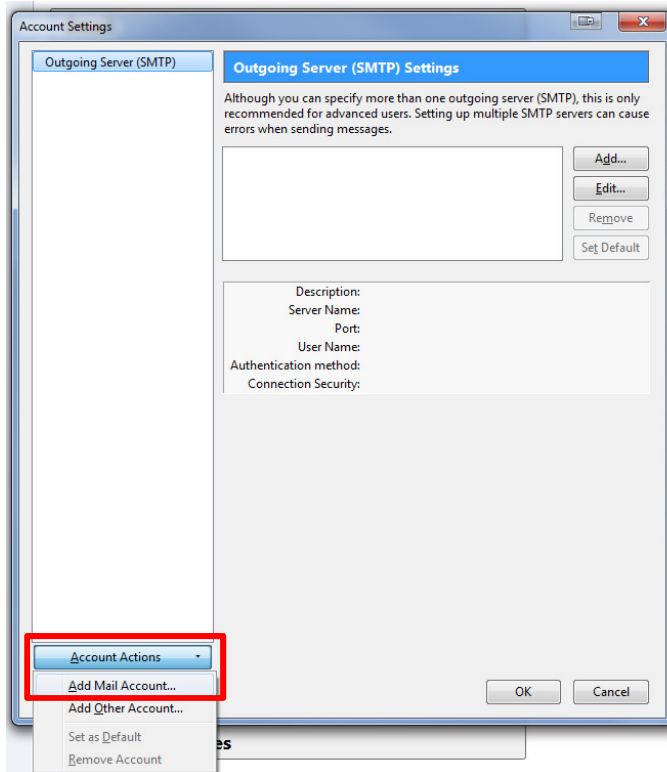


Mozilla Thunderbird/Eudora OSE

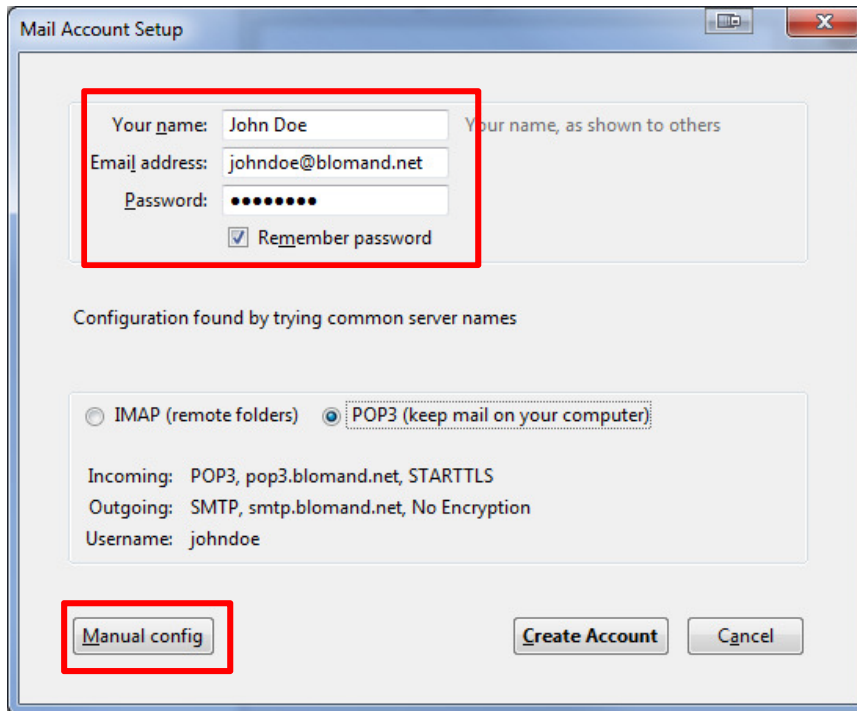
1. While in Mozilla Thunderbird or Eudora OSE click on **Tools** at the top and then **Account Settings**



2. Next click on **Account Actions** at the bottom left and then click **Add Mail Account**

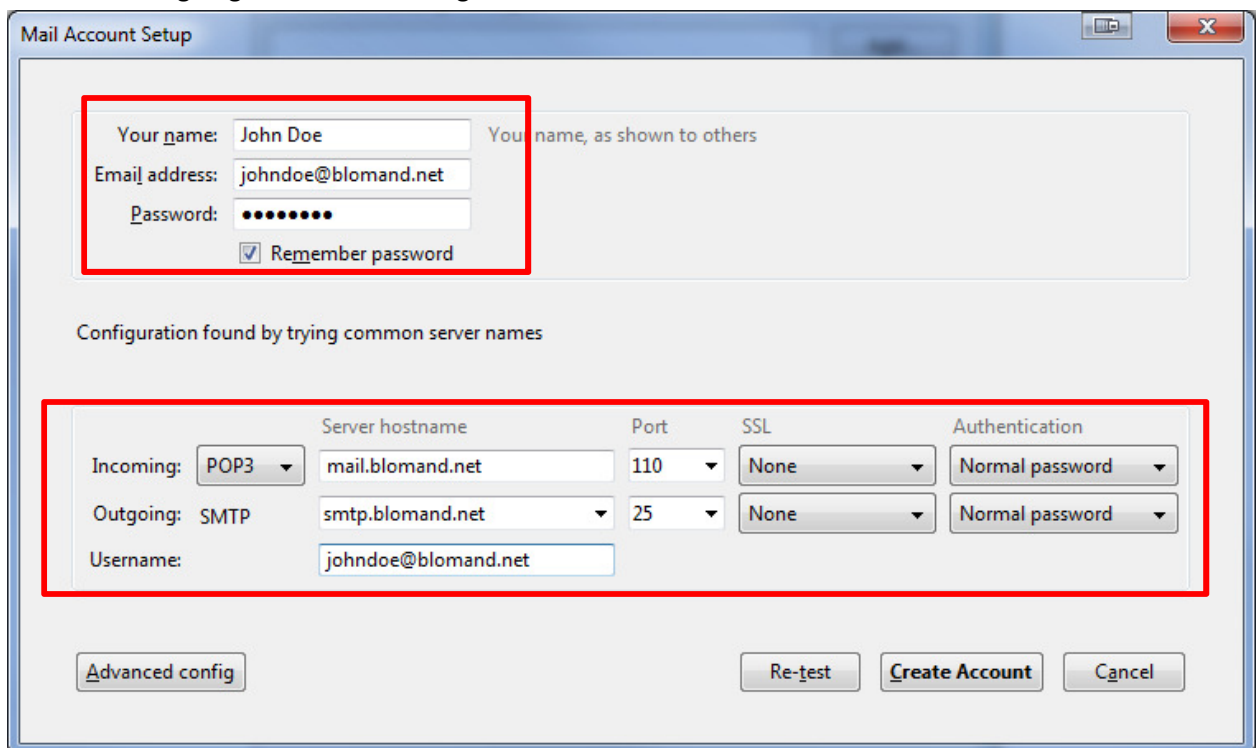


3. Type in your **Name**, **E-mail Address**, and **Password** and then click **Manual config**



The screenshot shows the 'Mail Account Setup' dialog box. The top section contains three input fields: 'Your name' with the value 'John Doe', 'Email address' with 'johndoe@blomand.net', and 'Password' with a masked password. A 'Remember password' checkbox is checked. Below this, the text 'Configuration found by trying common server names' is displayed. The next section has two radio buttons: 'IMAP (remote folders)' and 'POP3 (keep mail on your computer)', with the latter selected. Below the radio buttons, the following server settings are listed: 'Incoming: POP3, pop3.blomand.net, STARTTLS', 'Outgoing: SMTP, smtp.blomand.net, No Encryption', and 'Username: johndoe'. At the bottom, there are three buttons: 'Manual config', 'Create Account', and 'Cancel'. The 'Manual config' button is highlighted with a red box.

4. Next fill in the **Incoming Server** as **POP3** and **mail.blomand.net**. Also make sure the rest of the Incoming stuff is the same below. Next fill in the **Outgoing Server** as **smtp.blomand.net** and match the outgoing stuff to the settings below.



The screenshot shows the 'Mail Account Setup' dialog box with the 'Advanced config' section expanded. The top section is identical to the previous screenshot. The 'Advanced config' section is highlighted with a red box and contains the following fields:

	Server hostname	Port	SSL	Authentication	
Incoming:	POP3	mail.blomand.net	110	None	Normal password
Outgoing:	SMTP	smtp.blomand.net	25	None	Normal password
Username:	johndoe@blomand.net				

At the bottom of the dialog, there are four buttons: 'Advanced config', 'Re-test', 'Create Account', and 'Cancel'. The 'Advanced config' button is highlighted with a red box.

5. A warning message will come up. Put a checkmark in **I understand the risks** and click **Create Account**. Your account has now been created.

