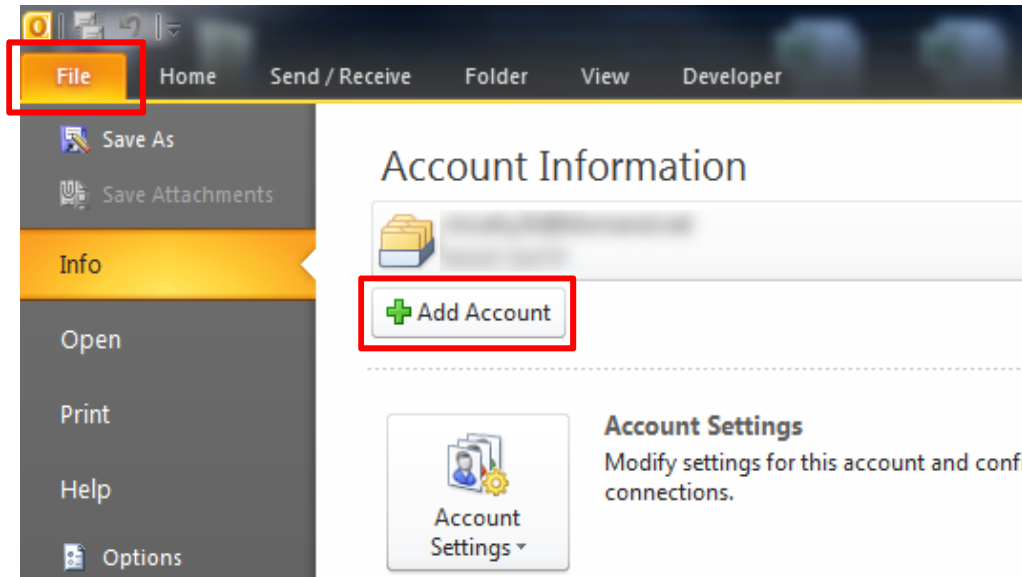
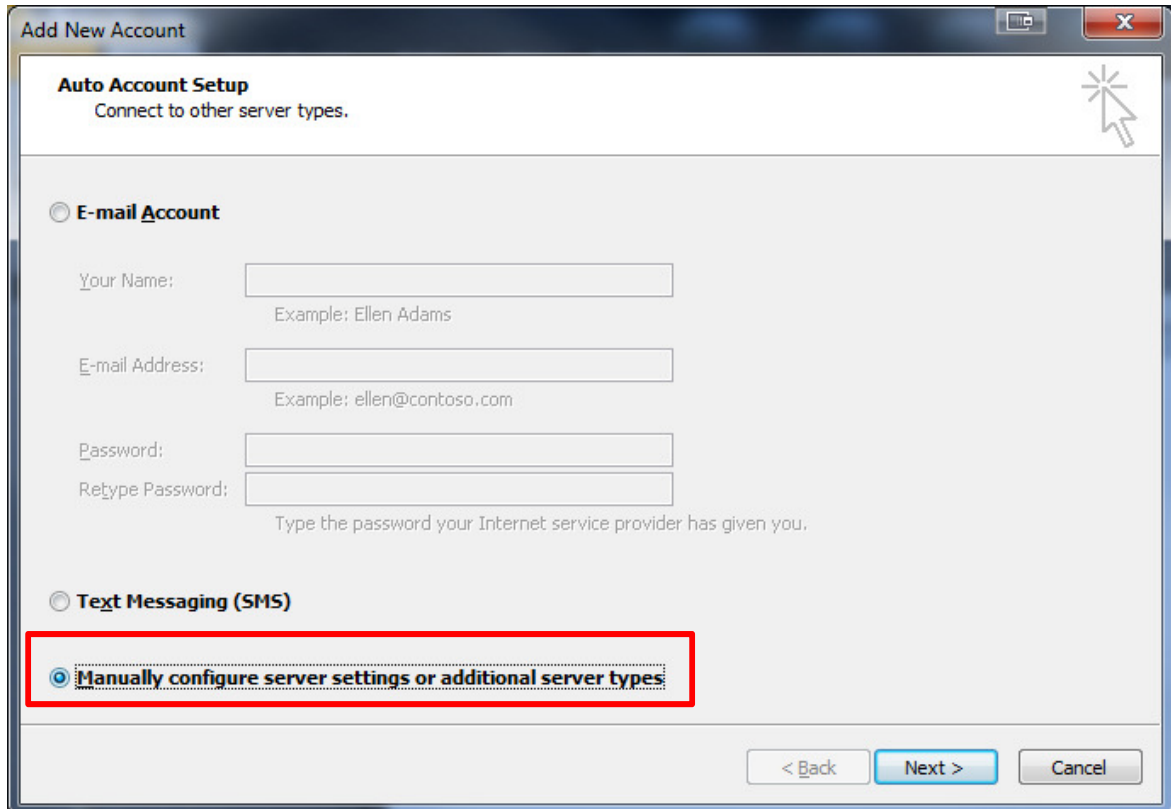


## E-mail Setup for Microsoft Outlook 2010

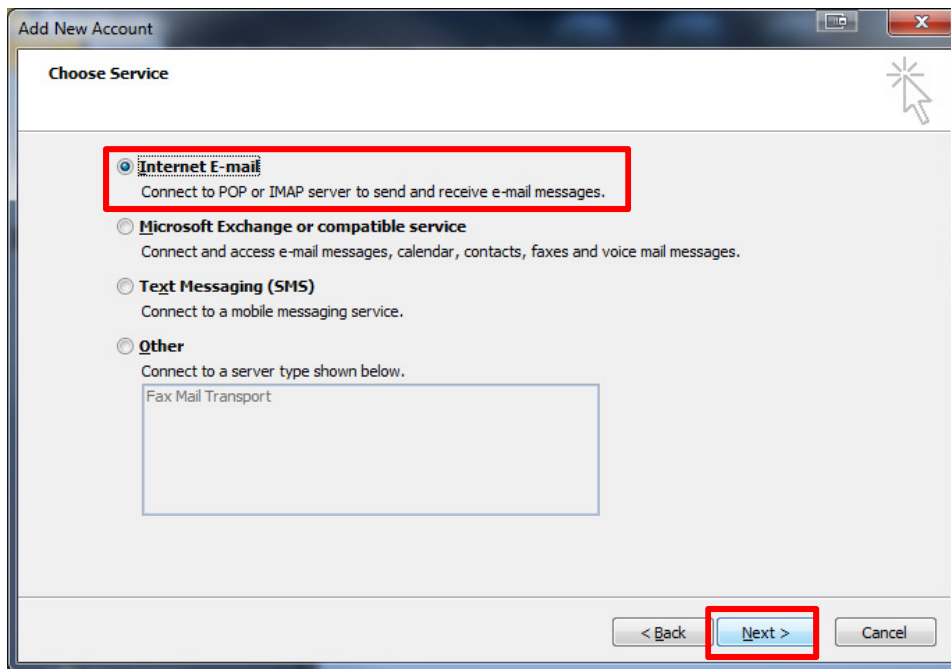
1. While in Microsoft Outlook Click on **File** in the upper left hand corner and click on **Add Account**



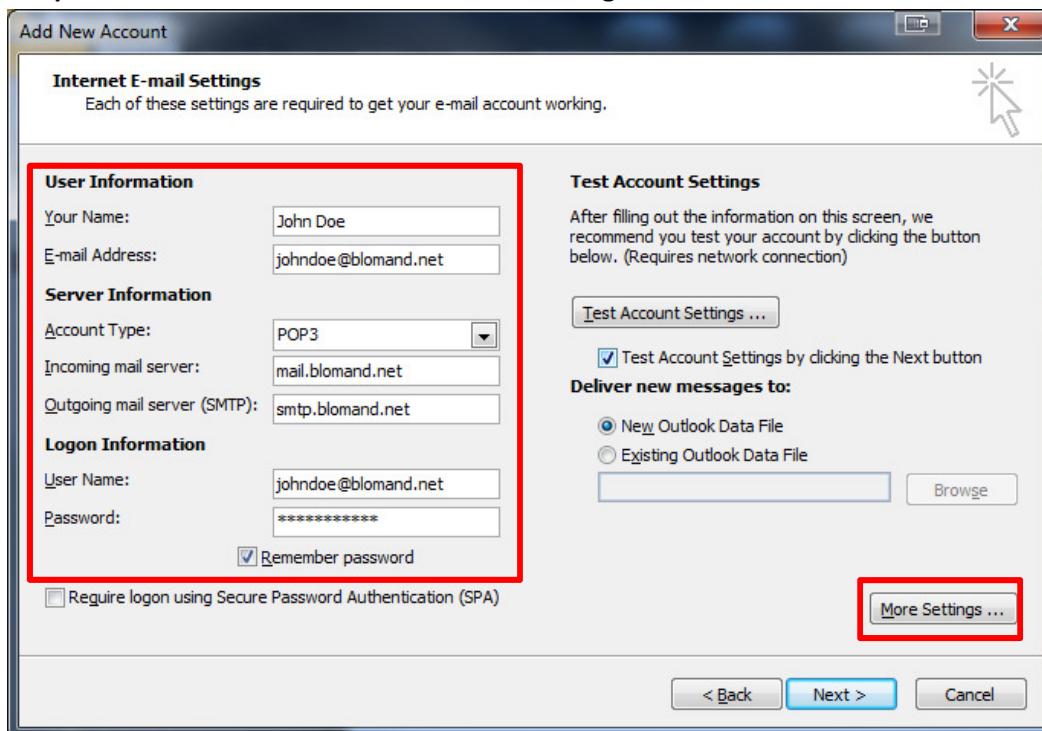
2. Next select **Manually configure server settings or additional server types**, and click **Next**.



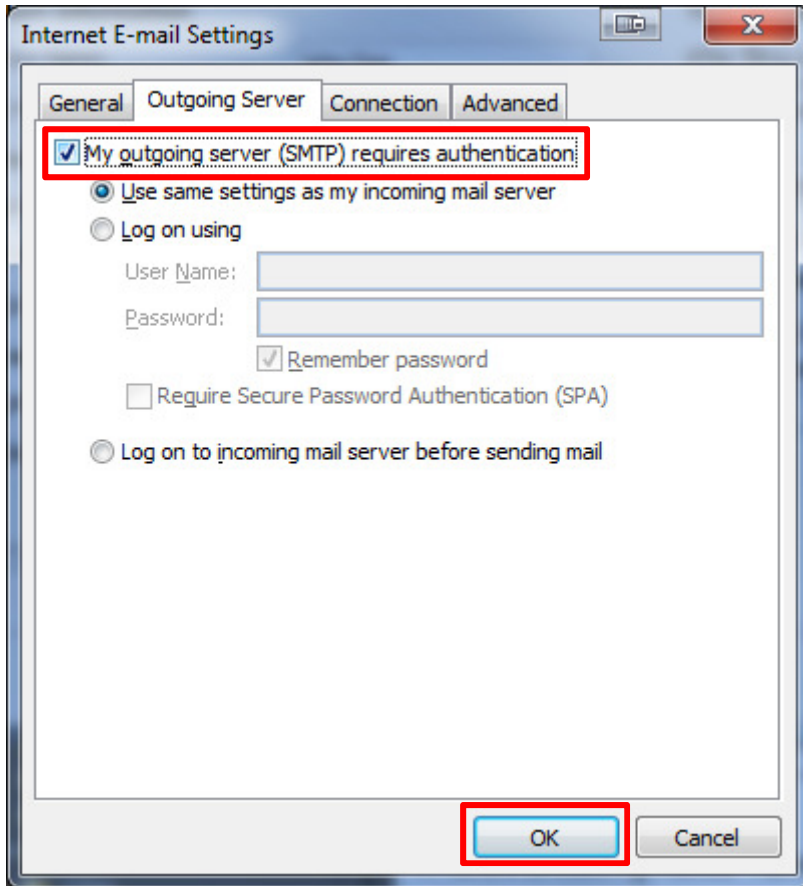
3. Next make sure that **Internet E-mail** is select and click **Next**.



4. Next fill in your **Name**, **E-mail address**, **Incoming mail server**, **Outgoing mail server**, **Username**, and **Password**. Your incoming server is **mail.blomand.net** and the Outgoing server is **smtp.blomand.net**. Then click on the **More Settings** button



- Then click on the Tab at the top that says **Outgoing Server** and put a check mark in **My outgoing server (SMTP) requires authentication**. Then click **OK** and then **Next** on the previous window



- Your e-mail should now be setup click Finish.

