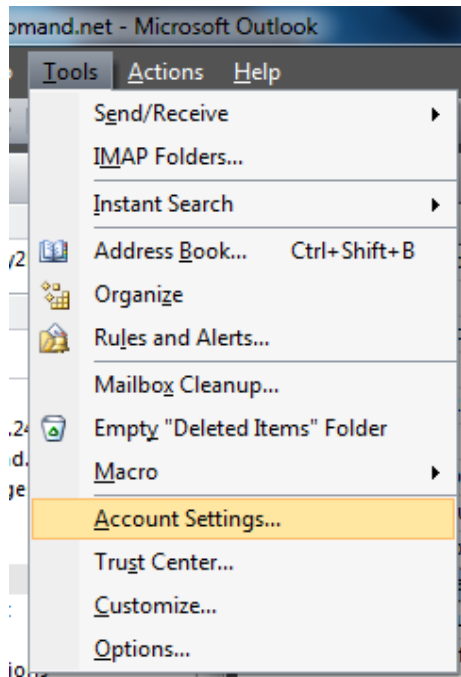
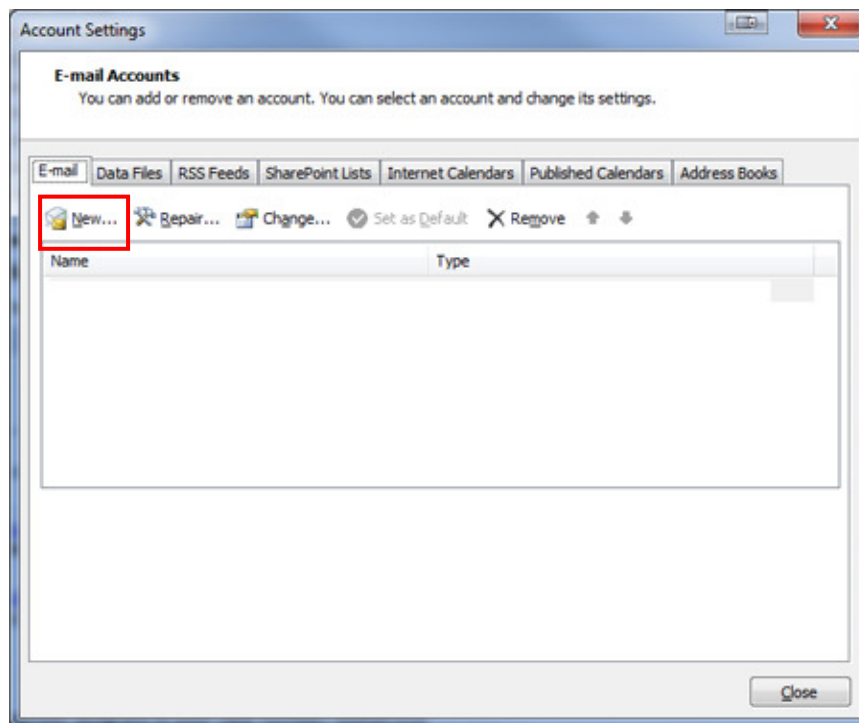


E-mail Setup for Microsoft Outlook 2007

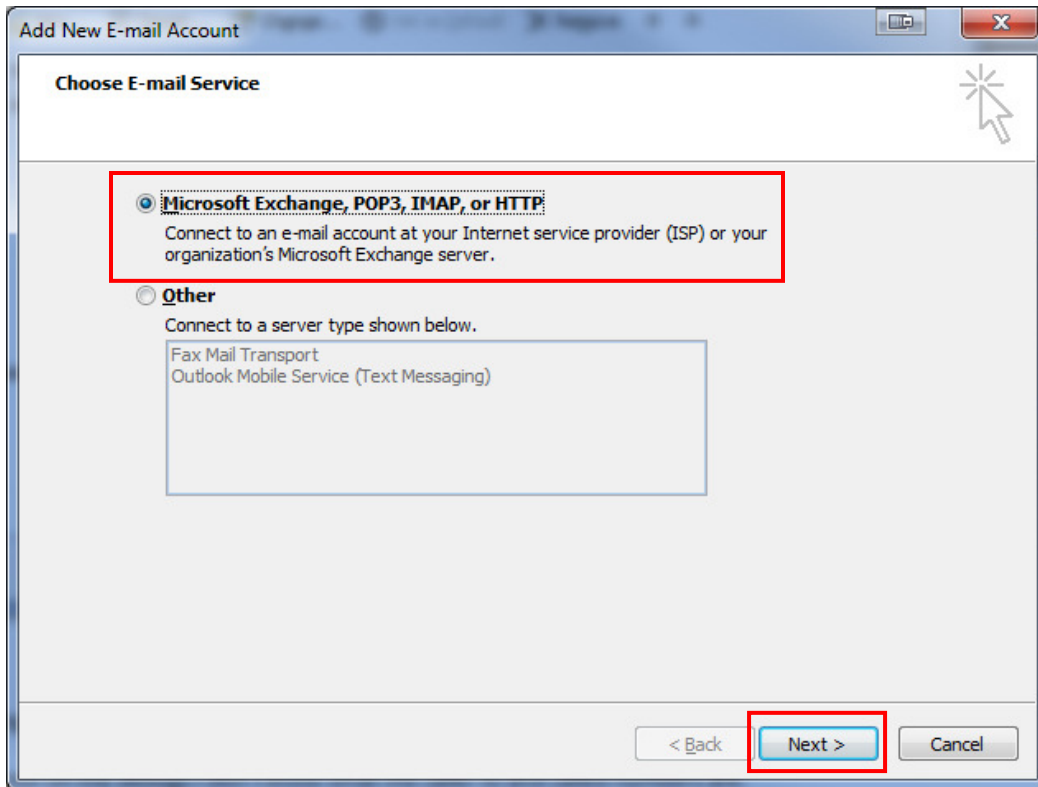
1. While in Microsoft Outlook Click on **Tools** at the top and then **Account Settings**.



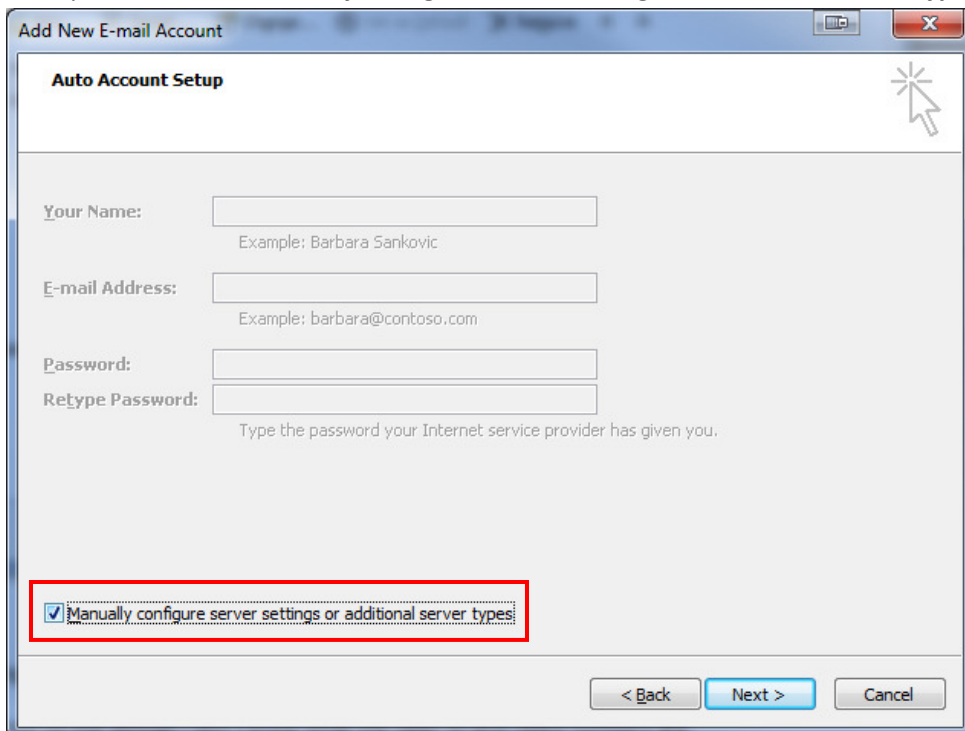
2. Next from the E-mail tab click the **New** button



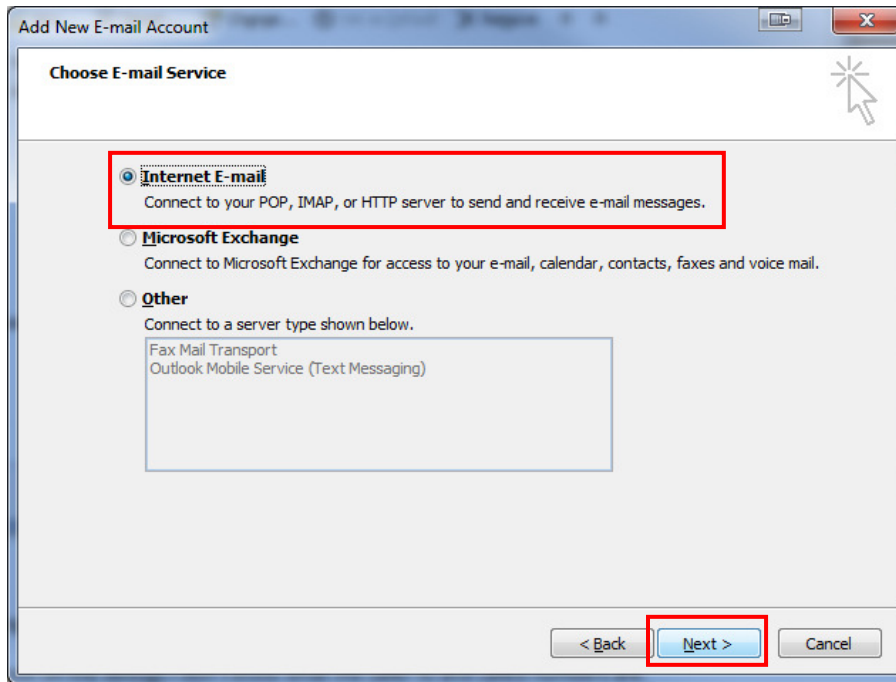
3. Make sure **Microsoft Exchange, POP3, IMAP, or HTTP** is selected and click **Next**.



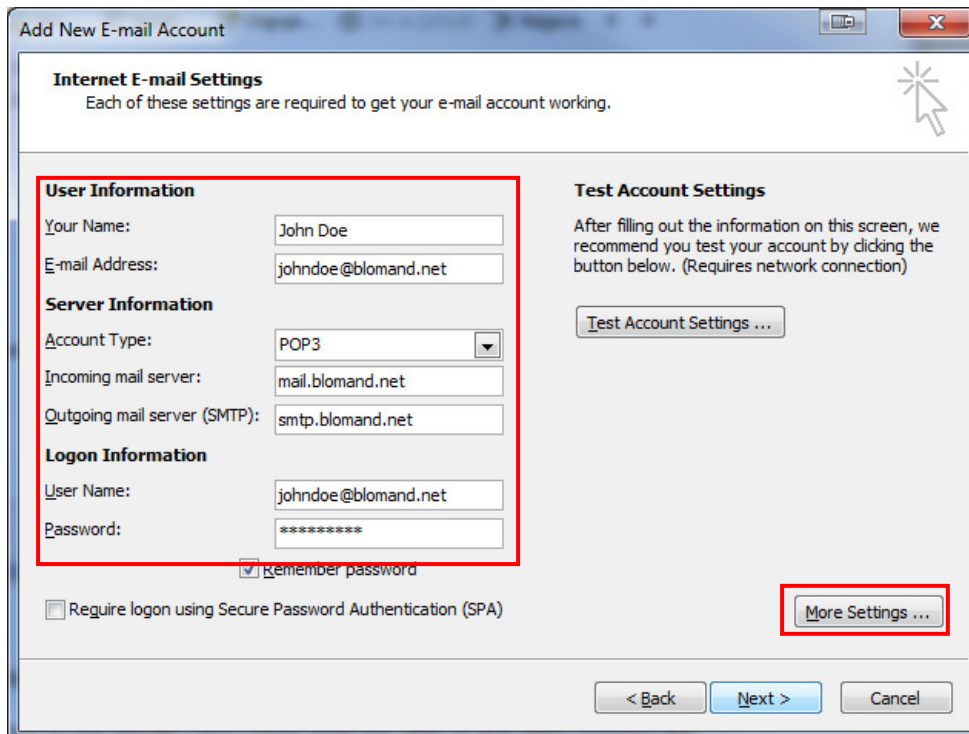
4. Next put a check in **Manually configure server settings or additional server types**



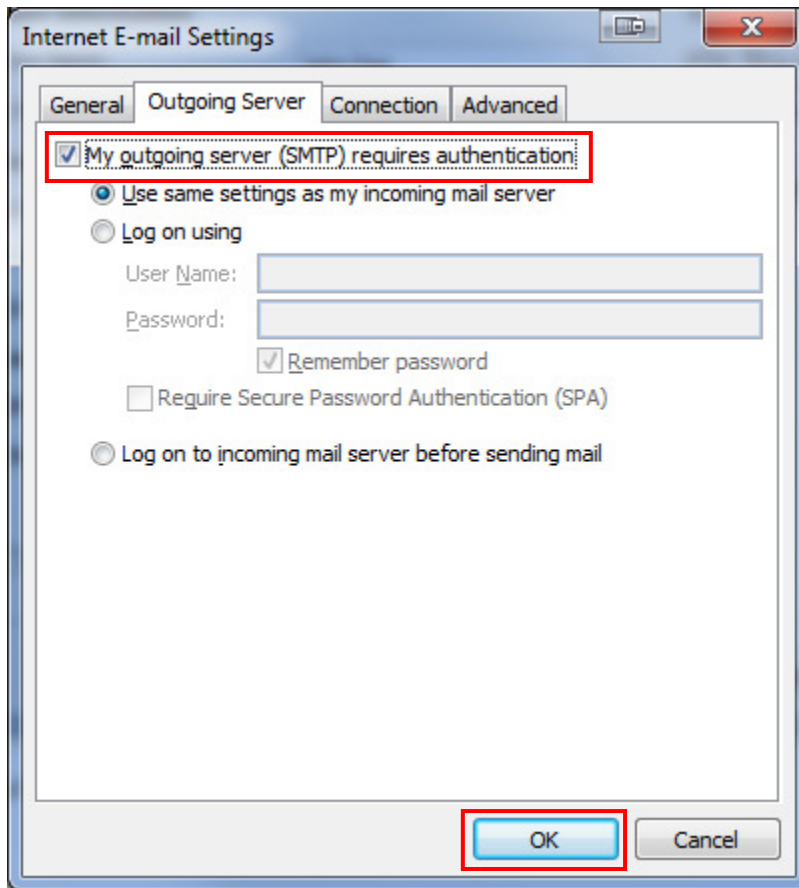
5. Next make sure that **Internet E-mail** is select and click **Next**.



6. Next fill in your **Name, E-mail address, Incoming mail server, Outgoing mail server, Username, and Password**. Your incoming server is **mail.blomand.net** and the Outgoing server is **smtp.blomand.net**. Then click on the **More Settings** button



7. Then click on the Tab at the top that says **Outgoing Server** and put a check mark in **My outgoing server (SMTP) requires authentication**. Then click **OK** and then **Next** on the previous window.



8. Your e-mail should now be setup click Finish.

